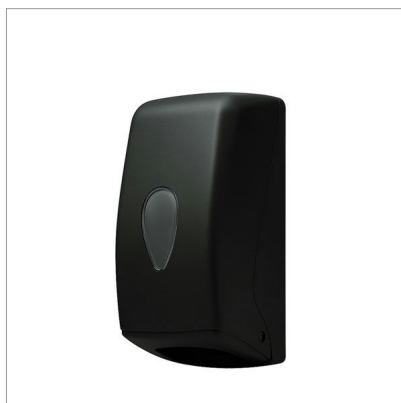


GENERAL INFO**NAME:** Stiloir**DESCRIPTION:** Interfold toilet tissue dispenser**RANGE:** Hygiene**CATEGORY:** Hygiene**REFERENCE:** 920205**HS CODE:** 39249000**PRODUCT ORIGIN:** UE**PRODUCT PICTURE****PRODUCT SPECIFICATIONS****Material:** ABS**Finish:** Soft touch**Colors:** Black**Dimensions:** 135 x 135 x 277 mm**Weight:** 0.45 kg**Capacity:** 500 sheets**ADDITIONAL INFO**

Base and cover in matte black soft-touch recycled ABS; polycarbonate front viewing window; for interfold toilet tissues; holds 500 interfolded sheets; quick and easy dispensing from below; versatile and innovative design; impact and temperature resistant; security lock with key; screw and plugs included.

SELLING UNIT & PACKING**Selling unit:** pc**Package type:** cardboard**Pcs per box:** 1**Package dim. (LxPxH):** 170 x 160 x 305 mm**Package gross weight:** 0.57 kg